

#TL100067



REAR WIPER DELETE/
INSTALLATION INSTRUCTIONS



Notes:

These instructions were written for a North American specification MkVII GTI. Other models are similar.

When disassembling the car, be sure to keep all fasteners so they can be reused. It is recommend that you get some kind of compartmented tray to organize the fastners, such as a fishing tackle box or several large ice cube trays. Fasteners that are not reused for reinstallation are noted in the instructions. All directions used in this manual (right, left, front, etc.) are based on if you were sitting in the drivers seat of the car.

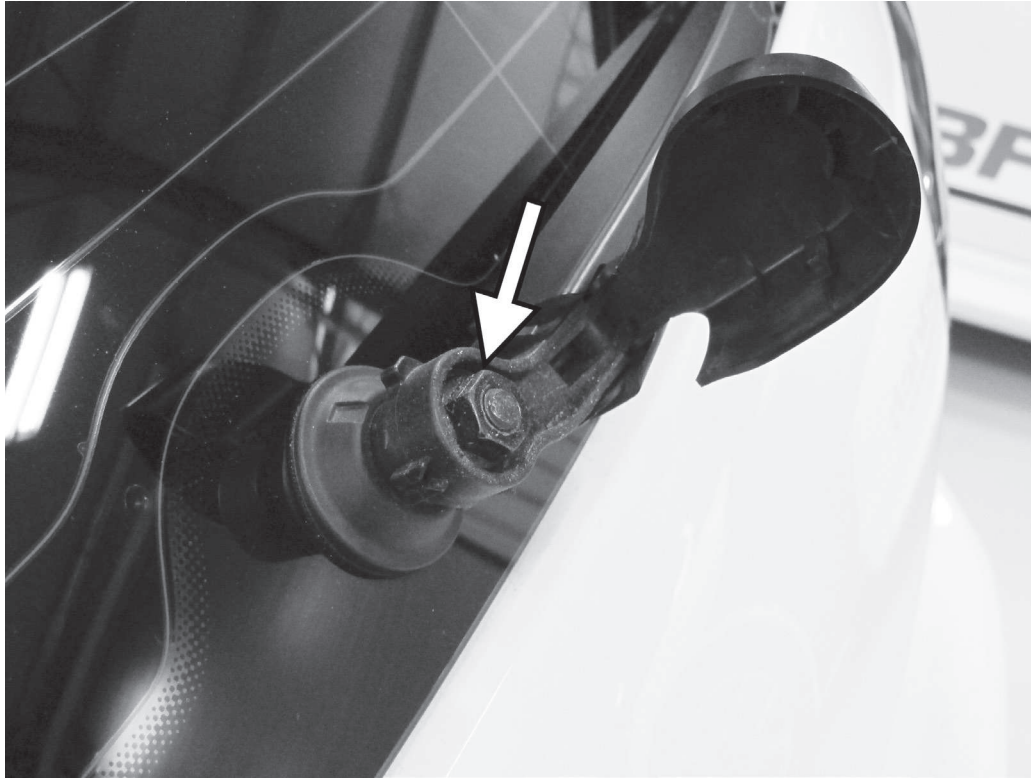
These instructions assume that you have basic mechanical skills and several varieties of the tools of basic hand tools in order to install the kit. If you have any questions about the install, feel free to contact your APR representative.



WWW.GOAPR.COM

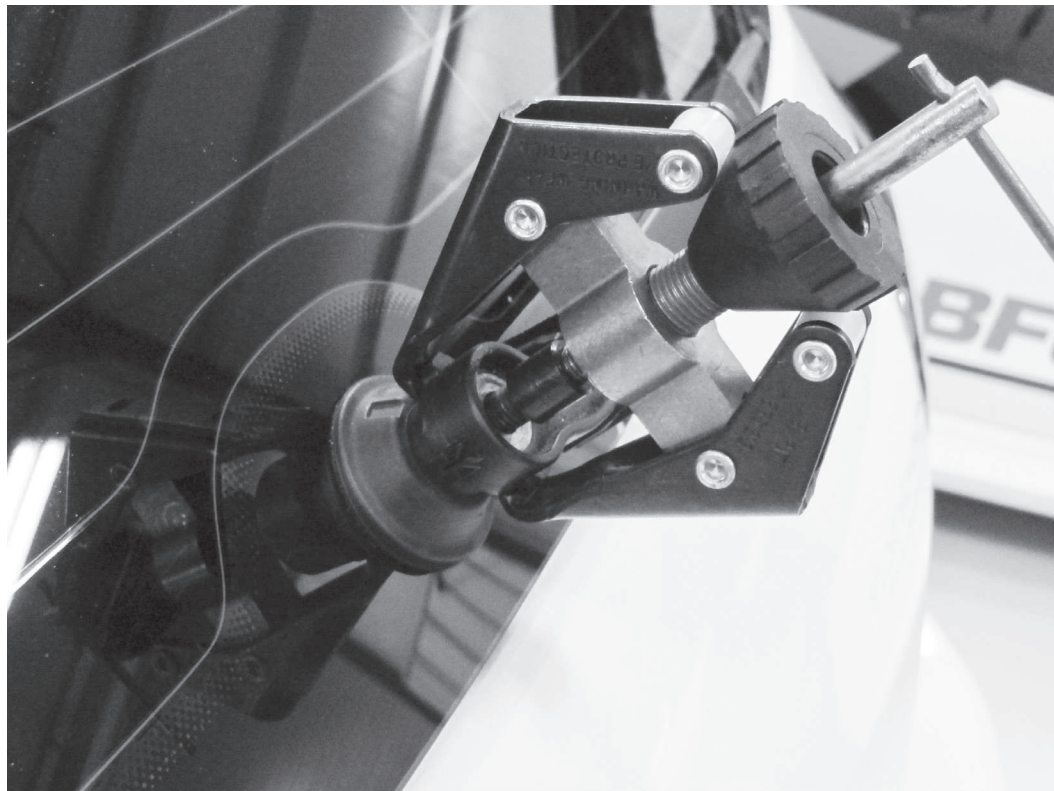
4800 US HWY 280 West Opelika Alabama 36801

TL100067

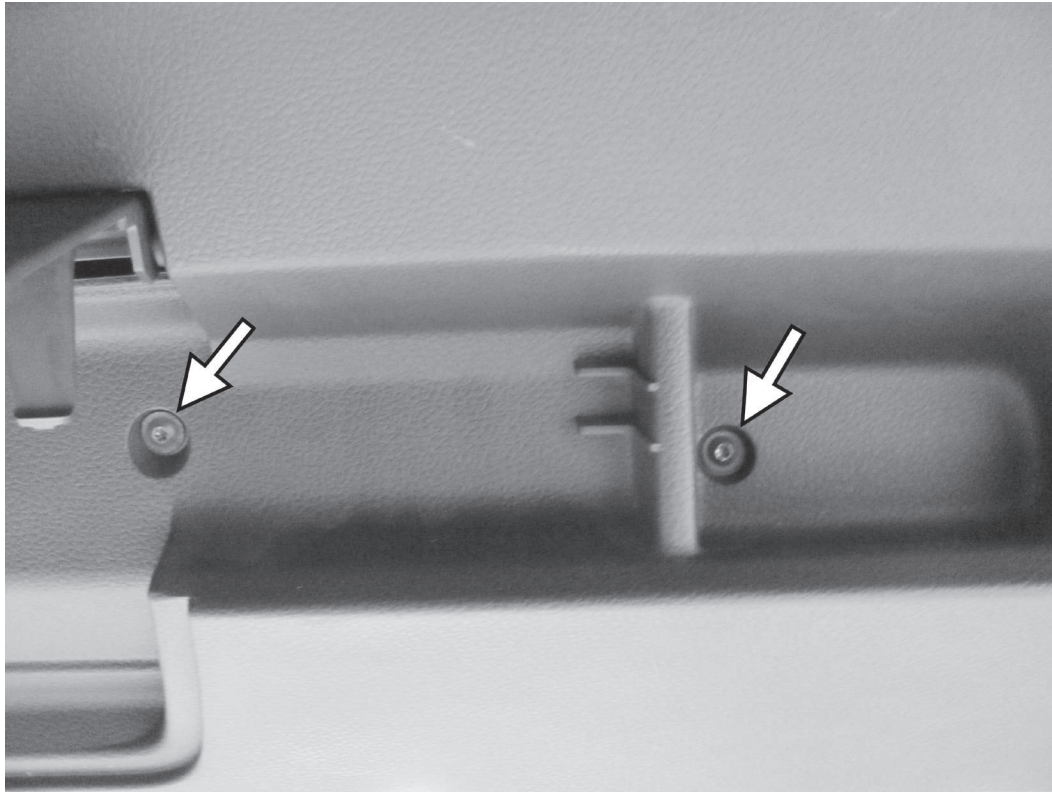


1) Carefully pry up the cover to the rear wiper by lifting the plastic cap from the left side of the wiper. Remove the 13mm nut holding the wiper in place.

2) Use a small puller to separate the wiper arm from the drive post. Do not tug on the wiper arm too much as you can break the rear glass.



TL100067



3) Open the rear hatch and remove the hatch trim panel screws. This may vary from vehicle to vehicle, and some cars may have plastic covers over the screws.

APR

4) Using a plastic trim removal tool, carefully begin to pry the hatch trim panel from the hatch. Work your way around the entire hatch trim panel before trying to remove the trim panel.

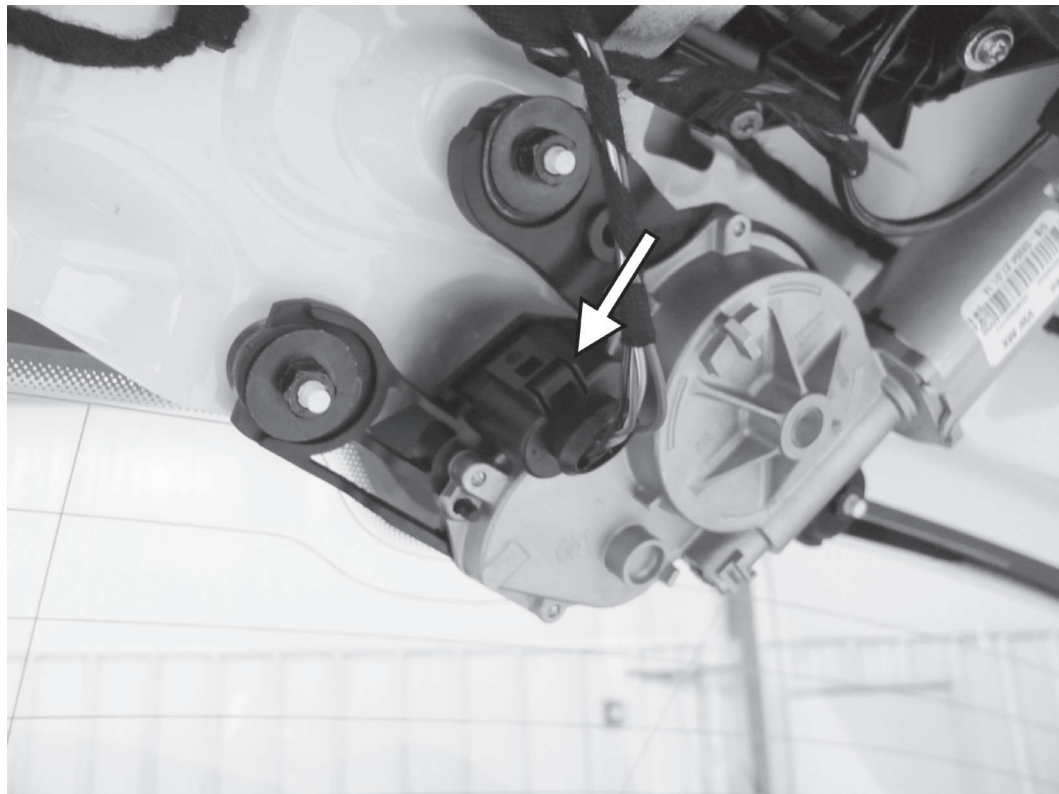


TL100067

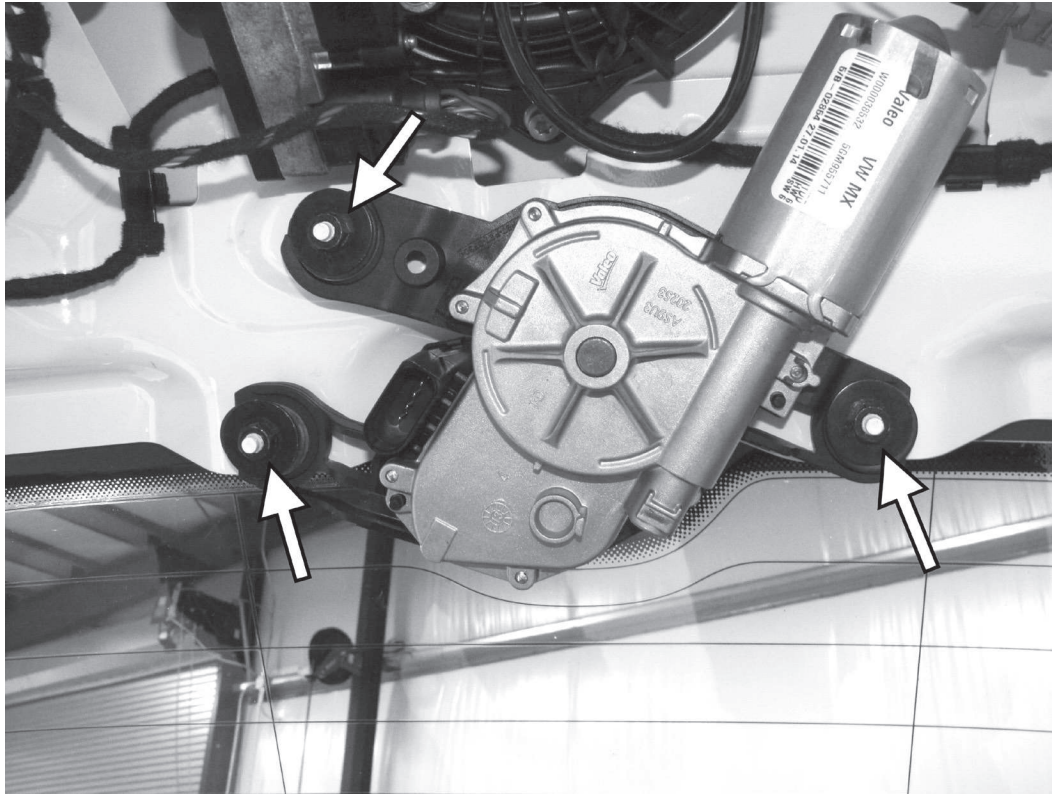


5) Note how the trim panel interfaces with the upper trim panel that surrounds the hatch glass. Remove the hatch trim panel from the car.

6) Disconnect the electrical connector from the rear wiper motor. Some vehicles may have a rear washer fluid hose, which will need to be disconnected and plugged.

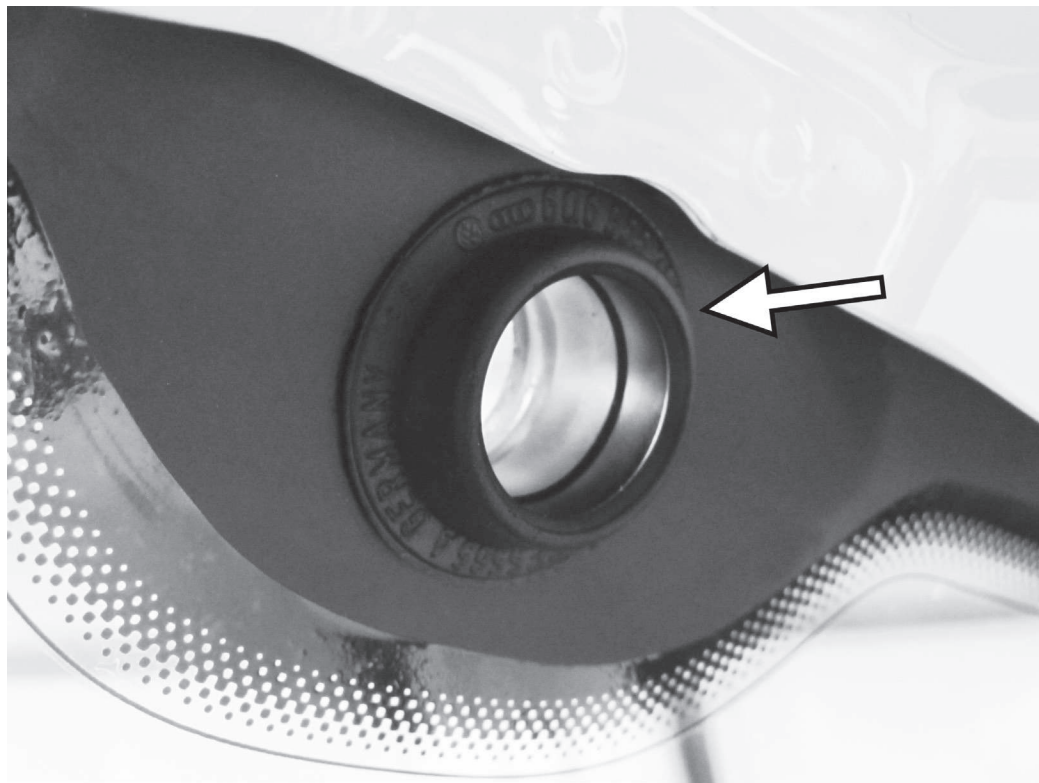


TL100067



7) Remove the three 10mm nuts holding the rear wiper motor in place, and remove the wiper motor from the car.

8) Remove the gasket from the hole in the rear glass by pushing the gasket from the inside of the car towards the outside of the glass.



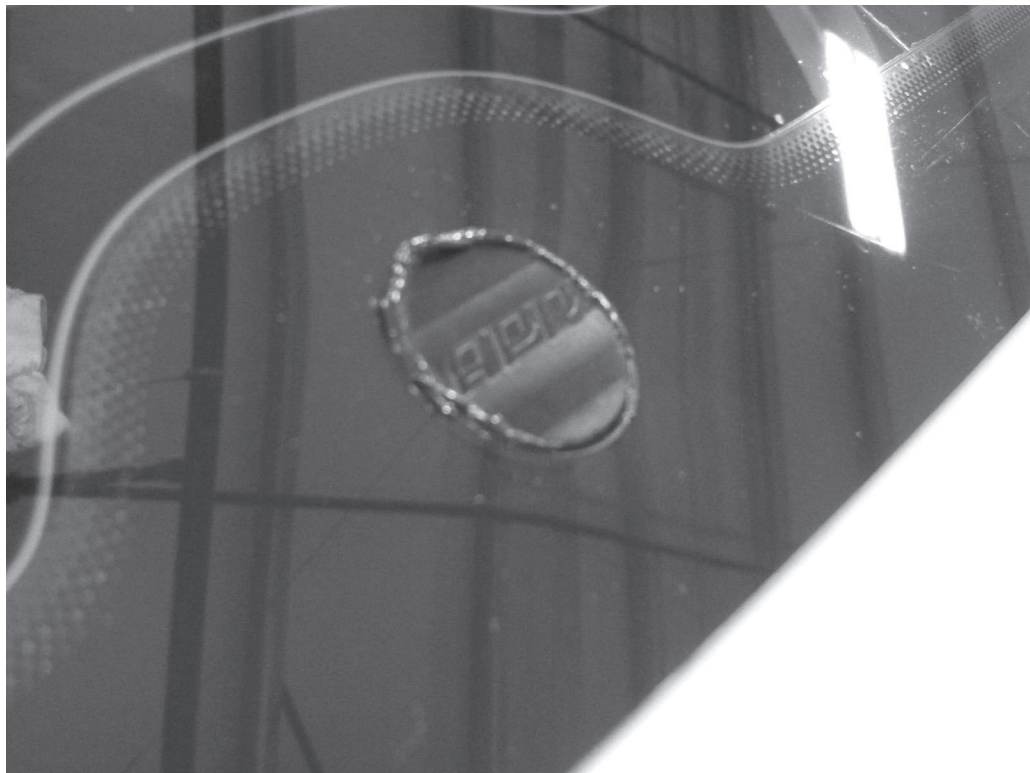
TL100067

9) Clean the APR wiper delete with an alcohol based cleaner, and then apply the gasket material in a small bead around the wiper delete as shown.

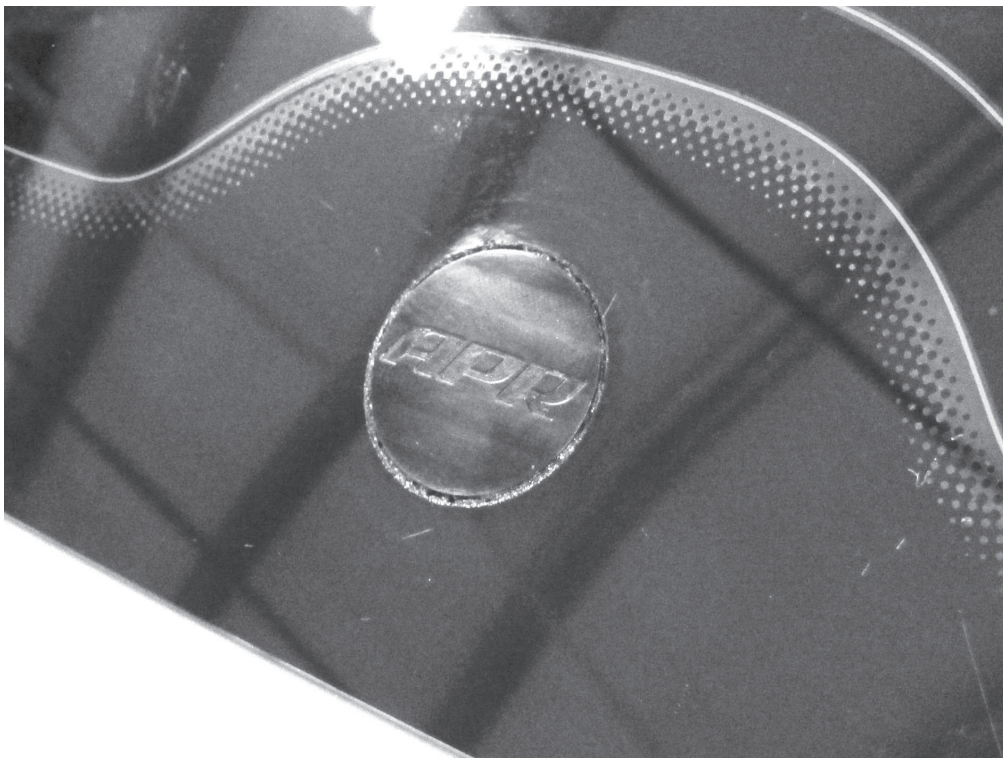


APR

10) Place the APR wiper delete in the hole in the rear hatch glass from the inside of the glass. Rotate the wiper delete until the APR logo is parallel to the ground.



TL100067



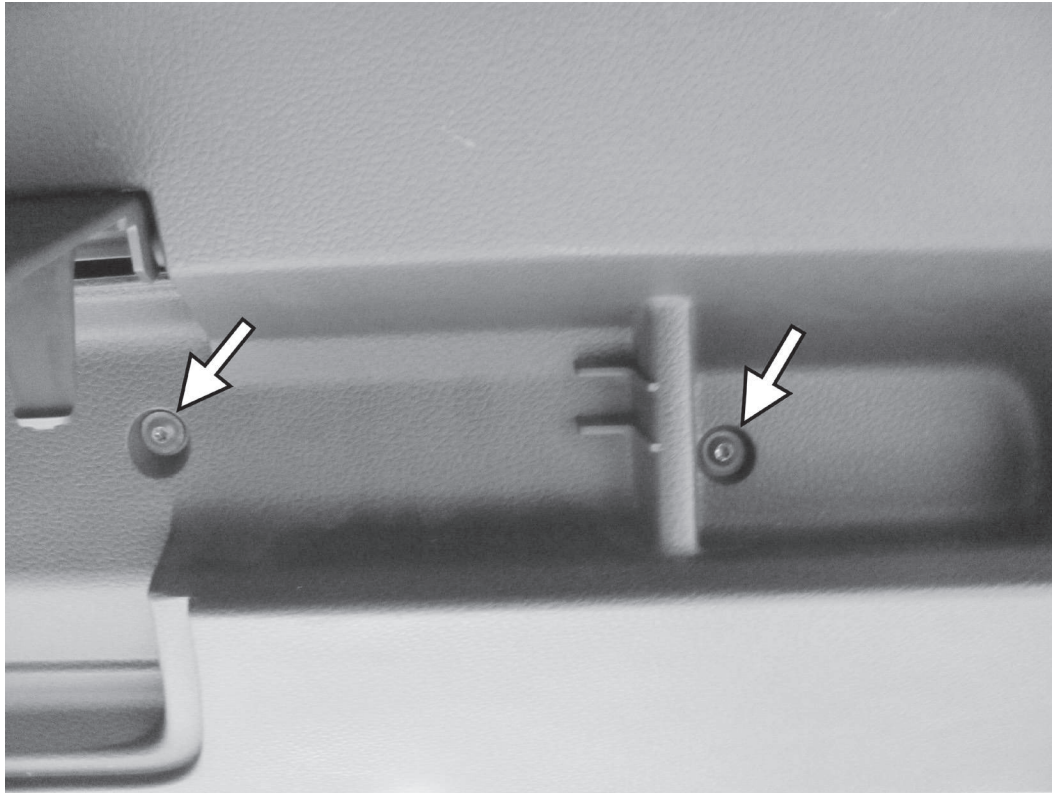
11) Wipe off any excess silicone from the outside of the glass, then allow the silicone to dry. If the vehicle needs to be driven before the silicone cures, apply some masking tape to hold it in place from inside the car.

APR

12) Make sure all of the metal clips are in place on the rear hatch trim panel. Reinstall the trim panel to the car, making sure the sides of the trim panel interface correctly with the upper trim panel that is still in the car.



TL100067



13) Reinstall the screws holding the rear hatch trim panel to the hatch of the car. Reinstall any plastic covers that were previously removed.

#TL100067



REAR WIPER DELETED
INSTALLATION INSTRUCTIONS

