



INSTALLATION GUIDE

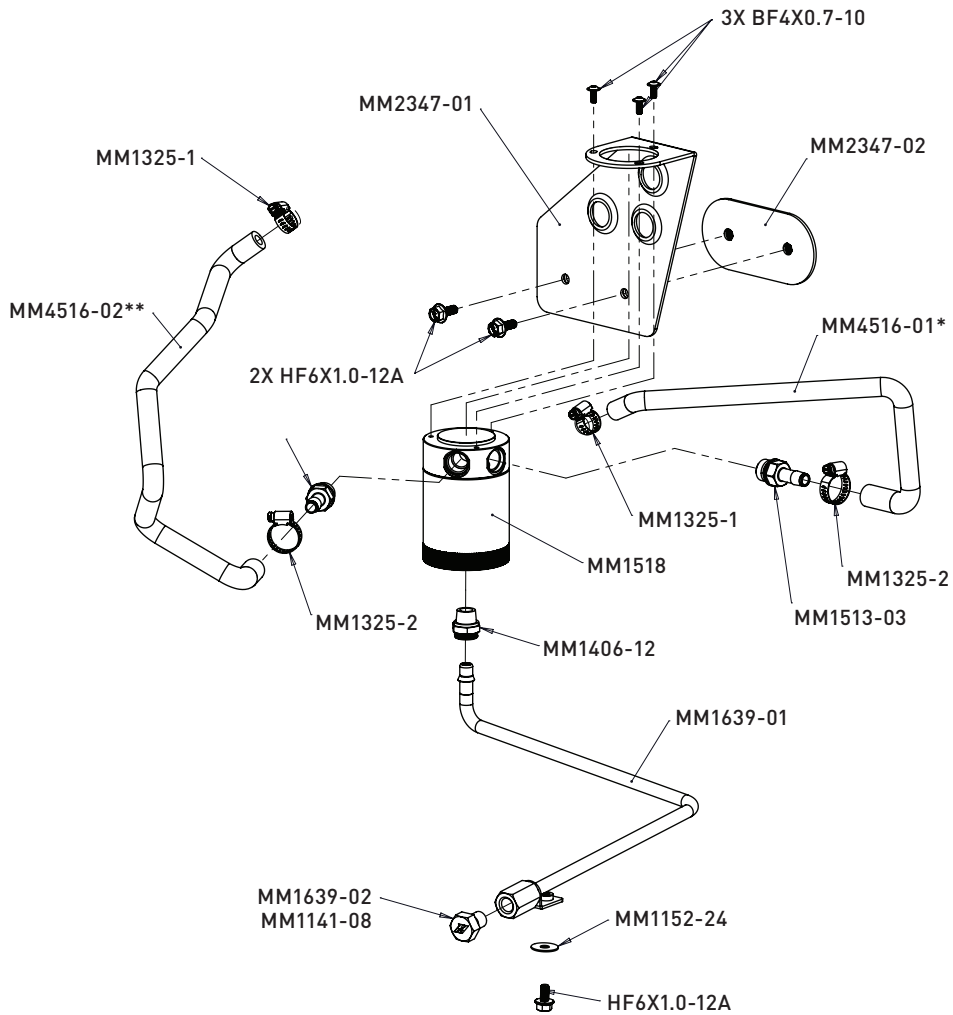
2020+ TOYOTA SUPRA 3.0 BAFFLED OIL CATCH CAN KIT, CCV SIDE | SKU: MMBCC-SUP-20CBE

TABLE OF CONTENTS

- Pg 1** RESOURCES & CONTACT INFORMATION
- Pg 2** EXPLODED DIAGRAM & PARTS BREAKDOWN
- Pg 3** IMPORTANT SAFETY INFORMATION
 - TOOLS NEEDED
 - INSTALLATION TIME
 - INSTALLATION DIFFICULTY
 - INSTALLATION INSTRUCTIONS
- Pg 9** CARE & MAINTENANCE
 - DISPOSAL INSTRUCTIONS
 - WARRANTY INFORMATION

RESOURCES & CONTACT

-  **CALL 1-877-GOMISHI**
CUSTOMER SERVICE HOURS: MON-FRI 8:30AM-5:00PM EST
-  **MISHIMOTO**
-  **GOMISHIMOTO**
-  **MISHIMOTO**
-  **WEBSITE**
WWW.MISHIMOTO.COM
-  **ENGINEERING BLOG**
WWW.MISHIMOTO.COM/ENGINEERING



PARTS BREAKDOWN		
PART NUMBER	DESCRIPTION	QUANTITY
MM1518	CATCH CAN	1
MM2347-01	BRACKET	1
MM2347-02	BACKING PLATE	1
BF4X0.7-10	BOLT	3
HF6X1.0-16A	BOLTS	2
MM1513-03	FITTING	2
MM4516-01	HOSE 1	1
MM1162-139	O-RING	1
MM4516-02	HOSE 2	1

PARTS BREAKDOWN		
PART NUMBER	DESCRIPTION	QUANTITY
MM1162-138	O-RING	1
MM1325-1	WORM GEAR CLAMP	2
MM1325-2	WORM GEAR CLAMP	2
MM1406-12	ADAPTER	1
MM1639-01	DRAIN TUBE	1
MM1639-02	DRAIN PLUG	1
MM1141-08	DOWTY SEAL	1
MM1152-24	WASHER	1
HF6X1.0-12A	BOLT	1

IMPORTANT SAFETY INFORMATION

- › Mishimoto recommends you use safety glasses and protective gloves during the install of their products
- › Raise vehicle only on jack stands or on a vehicle lift
- › Allow vehicle to cool completely prior to attempting installation
- › Do not run the engine or drive the vehicle while overheating; serious damage can occur
- › Please dispose of any liquids properly
- › Mishimoto is not responsible for any vehicle damage or personal injury due to installation errors, misuse, or removal of Mishimoto products
- › If you need any assistance while installing our products, reach out to our Customer Service Team at 1-877-GOMISHI

TOOLS NEEDED

6MM SOCKET	3/8" RATCHET
7MM SOCKET	17MM WRENCH
8MM SOCKET	19MM WRENCH
10MM SOCKET	2.5MM ALLEN KEY
16MM SOCKET	8MM ALLEN KEY
T30 TORX BIT	PICK TOOL
1/4" RATCHET AND EXTENSION	HEAT GUN

INSTALLATION TIME 3 HOURS

INSTALLATION DIFFICULTY 

INSTALLATION INSTRUCTIONS

01. Remove the engine cover.
02. Remove the air intake box.
03. Remove the PCV hose.
04. Remove the air intake tube.
05. Disconnect the electrical connector for the PCV heater. (1x electrical connector)

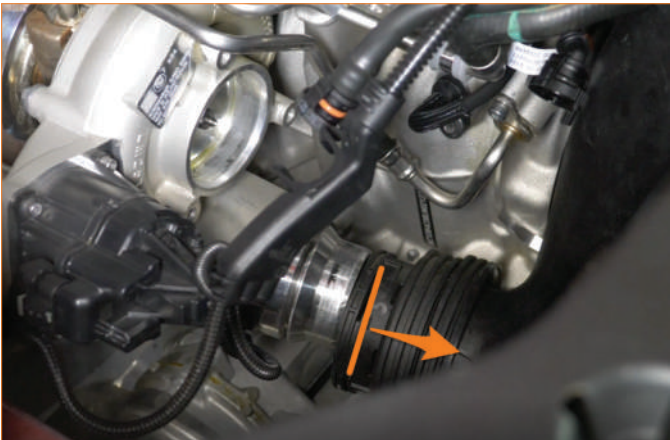


06. Remove the turbo inlet housing from the turbo. (3x T30 Torx bolts)



CONTINUED ON FOLLOWING PAGE

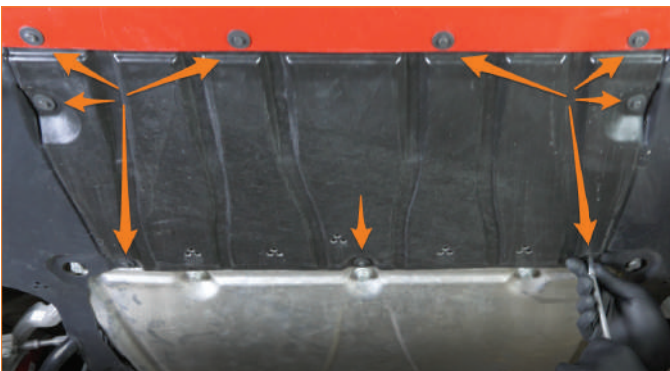
07. Disconnect the charge pipe from the turbo. (1x spring clip)



08. Remove the CCV line from the passenger side of the engine. (1x T30 Torx bolt)



09. Remove the plastic splash shield from the bottom of the vehicle. (9x 8mm screws)



10. Remove the aluminum splash shield from the bottom of the vehicle. (8x 8mm screws and 12x 16mm bolts)



11. Remove the plug from the catch can bottom using an 8mm Allen key.



CONTINUED ON FOLLOWING PAGE

12. Wrap the threads of the provided quick disconnect adapter with Teflon tape and thread it into the catch can bottom. (1x quick disconnect fitting)



13. Thread the catch can fittings into the catch can. (2x catch can fittings)



14. Remove the catch can bottom from the catch can.
15. Attach the catch can lid to the direct-fit bracket in the orientation shown below. (3x 2.5mm Allen bolts)

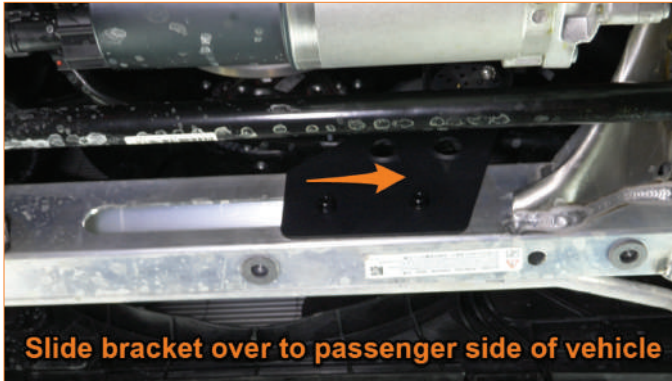


16. Place the backing plate inside the front cross member. (1x backing plate)



CONTINUED ON FOLLOWING PAGE

17. Install the direct-fit bracket, and catch can lid onto the front cross member. (2x 10mm bolts)



18. Remove the fittings from the CCV line by using a heat gun to soften the line. (2x fittings)



19. Install the fitting that has a check valve in it into the smaller diameter end of the hose with three bends. Rotate the fitting until it matches the orientation shown above. (1x small worm gear clamp)

**If the o-ring on the fitting is damaged or deformed, replace it with the provided o-ring.*



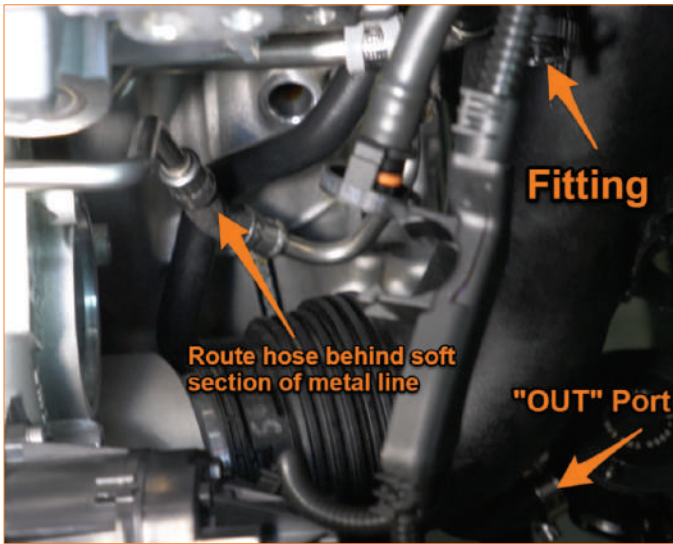
20. Install the remaining fitting into the small diameter of the other hose. Rotate the fitting until it matches the orientation shown above. (1x small worm gear clamp)

**If the o-ring on the fitting is damaged or deformed, replace it with the provided o-ring.*

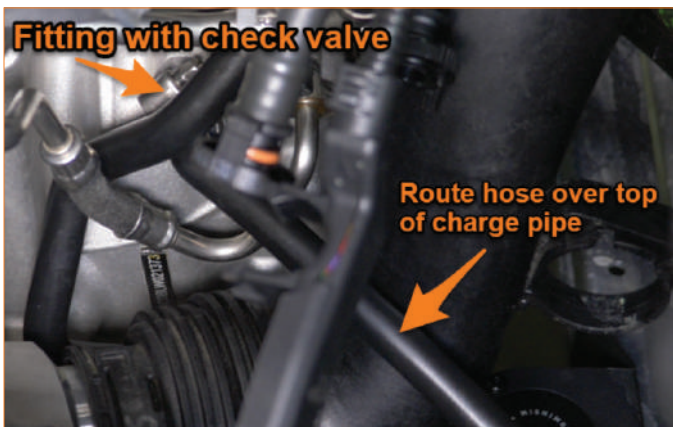


CONTINUED ON FOLLOWING PAGE

21. Route the hose with the non-check valve fitting along the passenger side of the engine block, as shown above. Attach this hose to the "OUT" port on the catch can. (1x large worm gear clamp)

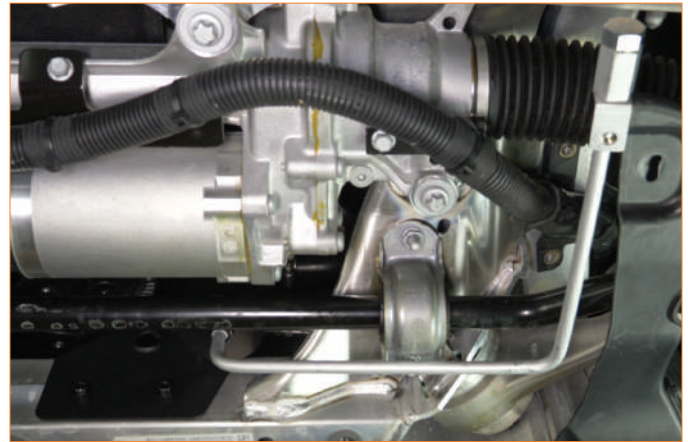


22. Reconnect the charge pipe to the turbo.
23. Route the hose with the check valve fitting over the top of the charge pipe, as shown above. Attach this hose to the "IN" port on the catch can. (1x large worm gear clamp and 1x T30 Torx bolt)



24. Reinstall the turbo inlet housing. (3x T30 torx bolts)
25. Reconnect the PCV heater electrical connector.

26. Reinstall the air intake tube.
27. Reinstall the PCV hose.
28. Reinstall the air intake box.
29. Reinstall the engine cover.
30. Install the catch can bottom to the catch can lid
31. Connect the aluminum drain line to the catch can bottom in the orientation shown above. (1x aluminum drain line)



32. Remove the plastic clip nut from the aluminum splash shield.



CONTINUED ON FOLLOWING PAGE

33. Reinstall the aluminum splash shield. (7x 8mm screws and 12x 16mm bolts).
34. Install the provided bolt and washer through the splash shields and thread it into the aluminum drain line. (1x 10mm bolt and 1x washer)



35. Reinstall the plastic splash shield. (9x 8mm screws)

Congratulations! You have finished installing the Mishimoto 2020+ Toyota Supra 3.0 Baffled Oil Catch Can Kit, CCV Side.

****For Care & Maintenance, Disposal Instructions, and Warranty Information continue to the following page.***

CARE & MAINTENANCE

- › Drain catch can every 3,000 miles.
- › Inspect catch can kit every 10,000 miles for loose or worn components.

DISPOSAL INSTRUCTIONS

- › Do not dispose of any product as unsorted municipal waste. Use separate collection facilities. Contact your local authority for information regarding the collection systems available.
- › Never improperly dispose of any coolant, oil, or other chemicals.

WARRANTY INFORMATION

- › All claims must be accompanied with a picture of the Mishimoto product showing the issue for which the claim is being submitted.
- › Mishimoto asks that the customer inspect their purchased item for any damage immediately upon arrival.

- › Any product deemed dead on arrival (DOA) must be claimed within 14 business days of delivery. Claims outside of this time frame will not be covered under the Mishimoto Lifetime Warranty.
- › This warranty does not include payment and/or reimbursement of the cost of labor in connection with the removal of any product returned pursuant to the warranty policy or in connection with the installation of any replacement items provided under the warranty policy.



- › Mishimoto has the right to refuse a claim at any time.
- › When Mishimoto accepts a claim, Mishimoto retains full discretion to choose if it will: (i) repair or replace purchaser's original Mishimoto product; (ii) replace purchaser's original Mishimoto product with the most current available model; or (iii) provide the purchaser with a gift card redeemable on [Mishimoto.com](https://www.mishimoto.com) in the amount of the original purchase price of the original Mishimoto product. The provision of a replacement of a Mishimoto product is subject to availability and Mishimoto retains the right to substitute any warranty claim item with a comparable item or credit at any time.
- › If Mishimoto determines that it will provide a replacement item in connection with a claim under this warranty policy, and such item is out of stock, Mishimoto will place the customer on backorder and ship the replacement product to the purchaser once it becomes available.
- › Mishimoto is not liable for incorrect shipments in connection with a claim if a claim form is completed incorrectly, or if a model number is not included in a claim.
- › If you have a vehicle equipped with an automatic transmission, please make sure to specify this within the text box on the claim form. Mishimoto is not responsible for incorrect replacement shipments if transmission type is not indicated.



WARNING
Cancer and
Reproductive Harm
www.P65Warnings.ca.gov

This product can expose you to chemicals which are known to the state of California to cause cancer. For more information visit: www.p65warnings.ca.gov