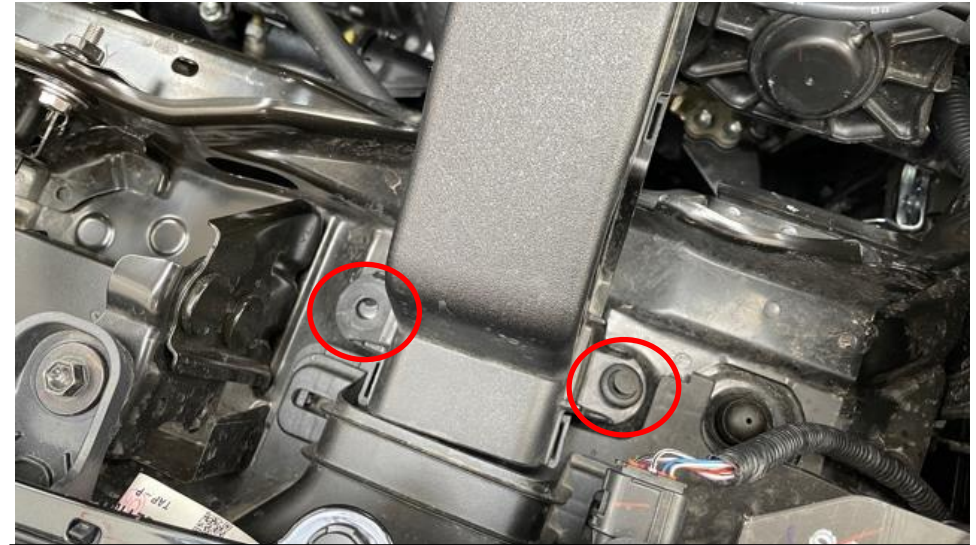
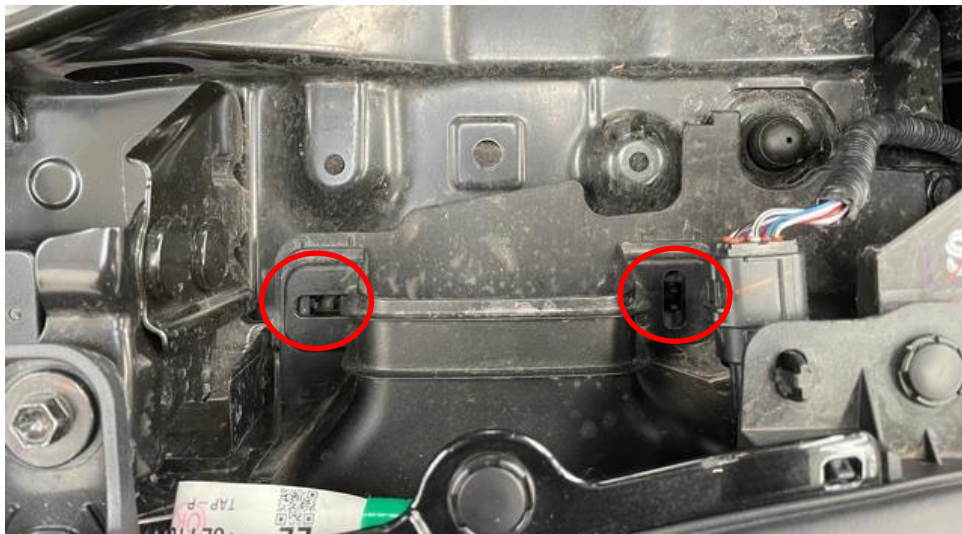




1. We will start by removing the stock airbox.



2. Remove the 2 plastic clips holding the airbox duct in place and remove it from the airbox.



3. Remove the scoop by squeezing the 2 internal clips.



4. Pull the vacuum line off the module on the airbox.



5. Unplug the module on the airbus and remove the bolt holding it secure.



6. Disconnect the vacuum line from the T-Piece on top of the rear tube.



7. Remove the vacuum module from the engine bay.



8. Disconnect the MAF sensor plug – make sure the ignition is OFF.



9. Loosen the hose clamp at the back of the airbox and remove the airbox from the engine bay – it can be pulled out.



10. Move the vacuum line out of the way and remove the M8 bolt with 12mm head holding the top of the tube in place. There is also a second M8 bolt on the lower side of the tube – remove this also (cannot be seen in the photo).



11. Loosen the hose clamp at the back of the tube.



12. Remove the tube from the engine bay.



13. Remove the MAF Sensor from the airbox.



14. Install the MAF sensor to the carbon housing as shown – use the SUPPLIED M4 screws. DO NOT use the stock screws.



15. Remove the 2 M6 bolts from the sides of the bonnet catch. REPLACE them with the new M6 bolts supplied.



16. Push the flexible hose onto the new plastic rear tube. See next step.



17. Push the hose all the way up to the last visible internal rib of the hose. It should look smooth on the inside like this. Tighten the hose clamp around the tube.



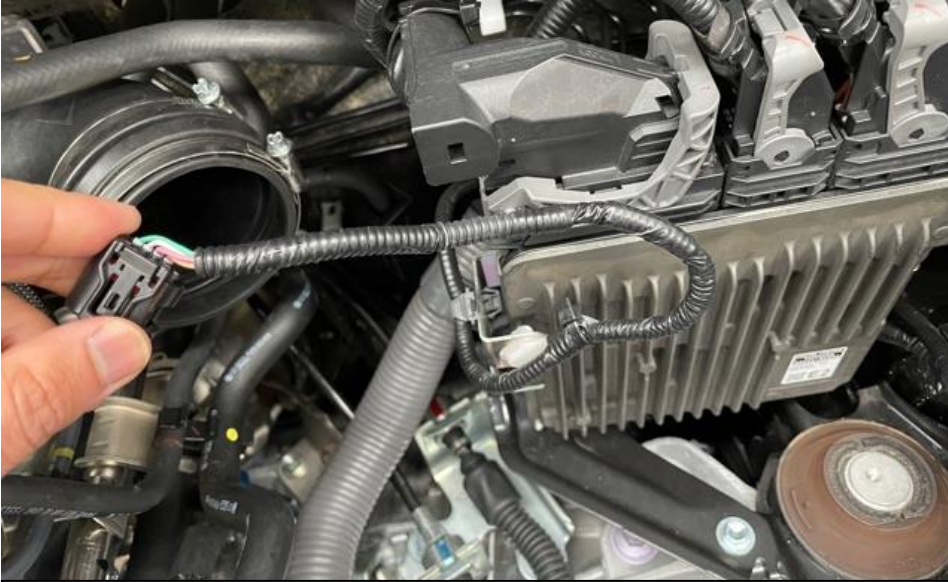
18. Insert the tube into the OEM rear rubber hose. Rotate the tube so that the tube mount lines up with the metal bracket. Do not insert the newly supplied 13mm bolt yet.



19. With the tube mount rotated into the correct place – tighten the hose clamp around the tube.



20. Plug the T-Piece with the supplied banking plug and secure it to the bracket on the tube.



21. Remove the plastic shroud around the MAF sensor wire.



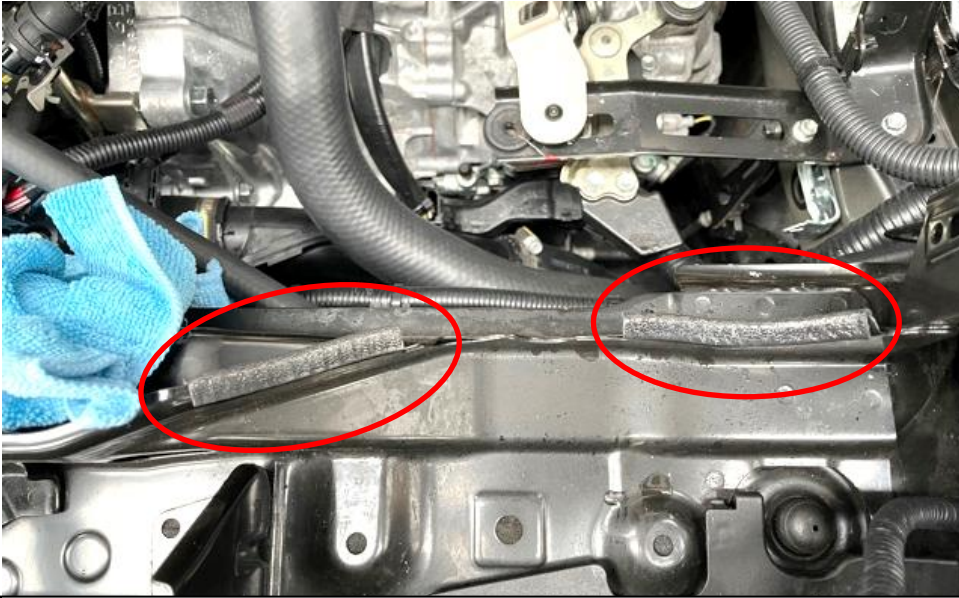
22. Clip the loose vacuum module plug into the spare hole on the chassis next to the airbox mount and tuck away the plug into the arch.



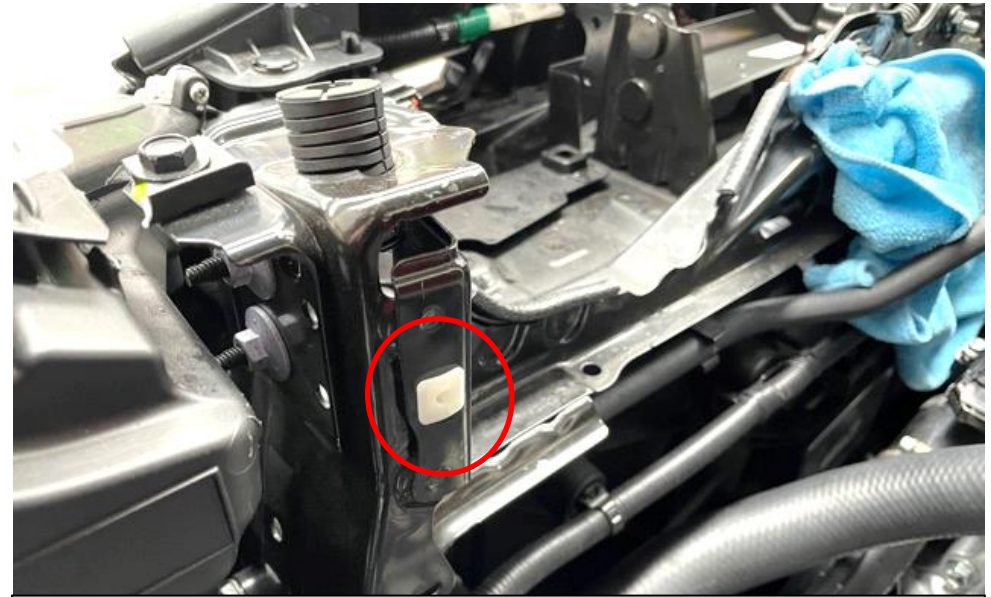
23. Insert the carbon housing into the flexible hose – DO NOT tighten it. Do not mount the feet to the rubber grommets yet.



24. Place a cloth on the slam panel area for protection while installing the duct.



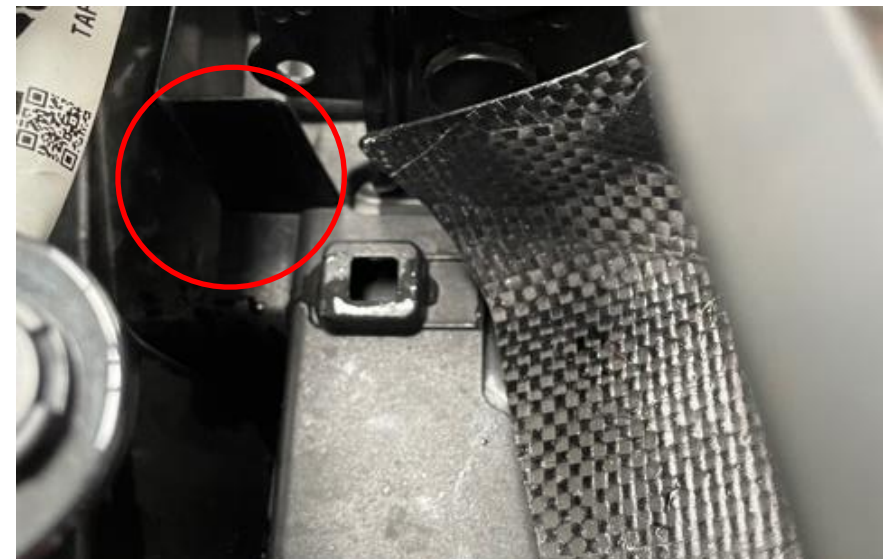
25. Push the 2 rubber strips onto the bodywork where the duct will be positioned.



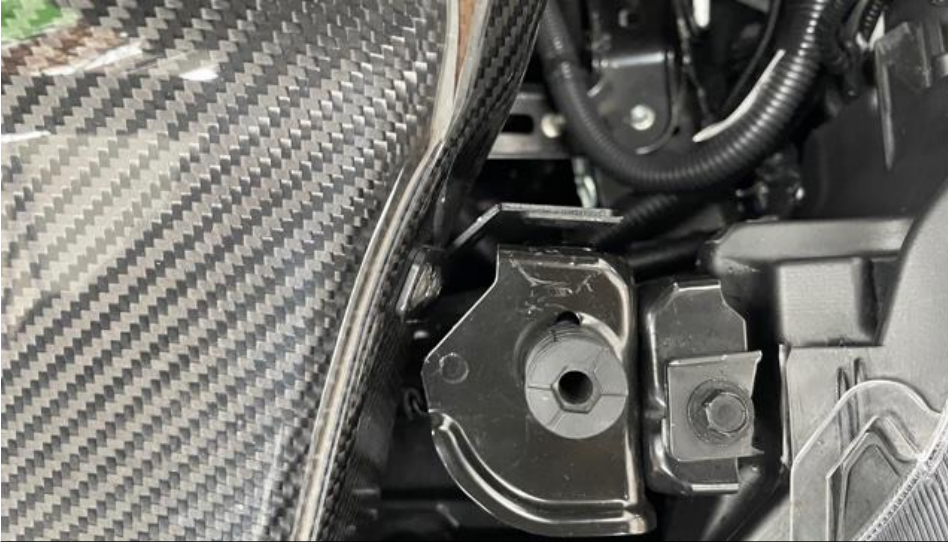
26. Insert the supplied white plastic clip into the square hole in the bodywork underneath the bonnet stop.



27. Carefully insert the duct – push the housing back to give enough clearance.



28. Avoid the plastic trim on the inside. The carbon should be positioned inside this trim.



29. Carefully rotate the duct down so that the bracket on the right comes down in front of the bonnet stop section.



30. Position the bracket in front of the white clip.



31. Position the lower bracket over the new M6 bolts installed previously. Remove the cloth.



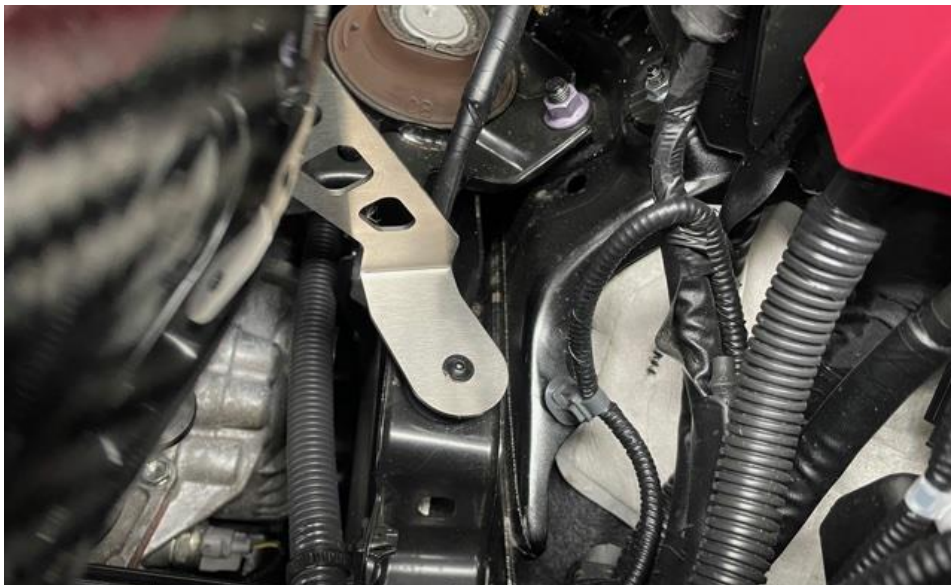
32. Secure the mounts to the base of the housing bracket using the supplied M5 screws and washers.



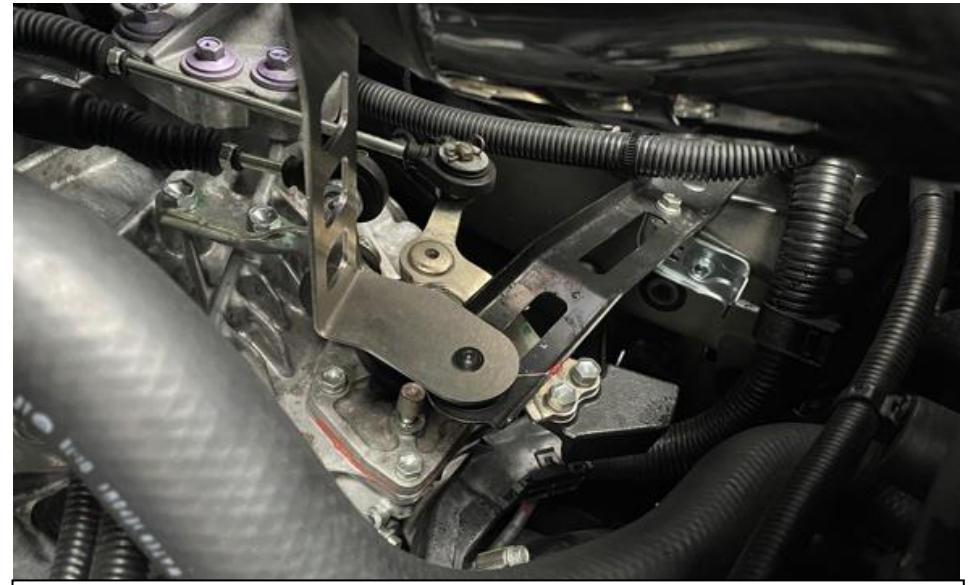
33. Using the supplied M5 cutting screw as shown - screw into the white clip through the bracket but DO NOT tighten yet.



34. Now position the housing into the correct location and push the bracket mounts onto the rubber grommets – see next step.



35. Push the 2 mounts on the base of the bracket into the rubber grommets which held the stock airbox.



36. This is the second mount in place.



37. Line up the duct with the housing and now tighten the screw which went into the plastic clip. See next step.



38. Tighten this screw.



39. Secure the bracket by inserting 2 x M6 nuts onto the new bolts.



40. Take the NEW M8 12mm head bolt and Locking Washer.



41. Secure the rear tube with the new M8 bolts and washer. The washer **MUST** go between the head of the bolt and the tube mount.



42. Plug the MAF sensor in and tighten the hose clamp around the housing. **DO NOT** over tighten onto the carbon.



You have now completed the installation of the Eventuri GR Yaris System.

Eventuri cannot take responsibility for an incorrectly installed intake or any damage caused during installation.