



INSTALLATION GUIDE

**CTS Turbo Audi B8/8.5 Intake Kit
CTS-IT-300**



**20630 Mufford Crescent, Unit #309
Langley, British Columbia V2Y 2V9**

www.CTSTURBO.com

WHAT IS INCLUDED

1. Heat Shield
2. Gear clamps
3. Air filter
4. Silicone connector
5. Inlet pipe
6. Breather filter
7. Billet breather connector

**TOOLS REQUIRED**

1. Phillips Screwdriver
2. 7mm, 8mm Sockets
3. T-25 torx
4. 2.5mm Allen

NOTES

Vehicle used in this guide is a 2011 Audi S4. Always make sure the car is safe to work on. Do not work on a hot motor. We do not accept any liability for incorrect installation or damage during the install.

STEP 1

Begin by unclipping the fuel return line from the top of the stock air intake hose.

**STEP 2**

Unclip the evap hose from the back side of the stock intake hose.



STEP 3

Loosen the clamp connecting the factory airbox hose to the throttle body

**STEP 4**

Loosen the clamp on the airbox side of the intake hose.



STEP 5

Remove the intake hose and unattach the vacuum line on the throttle body side.

**STEP 6**

Unclip and pull out the factory air duct.



STEP 7

Remove the stock airbox by lifting it up from the engine bay.

Make sure to unclip the breather hose from the bottom of the box.

**STEP 8**

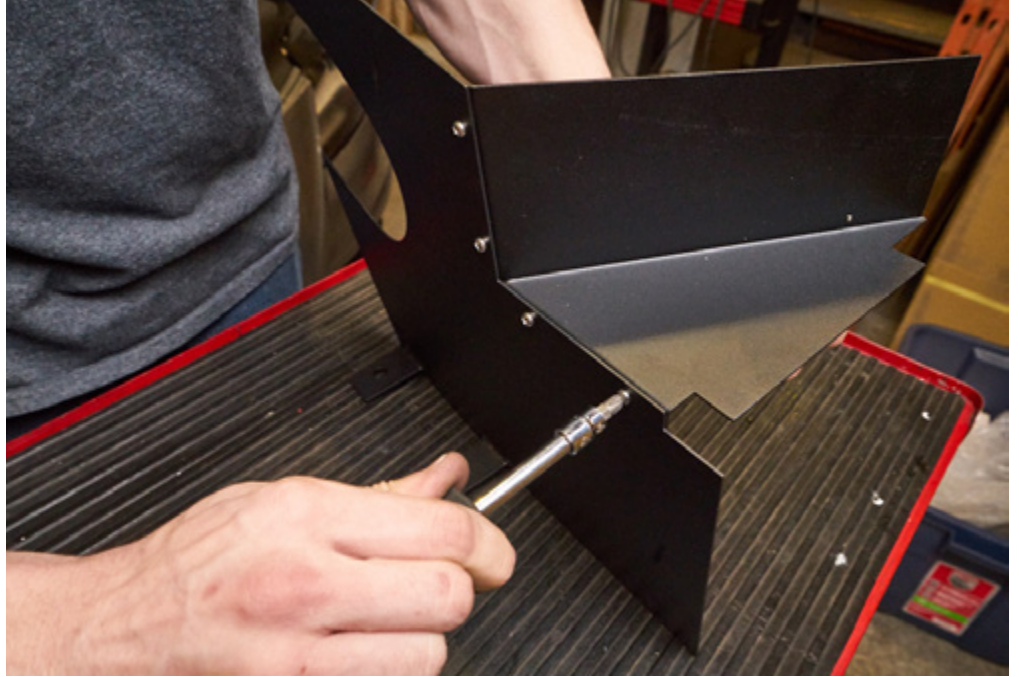
Set aside all the parts and tools you will need to assemble the heatshield.

You will need a phillips head screwdriver and a 7mm socket.

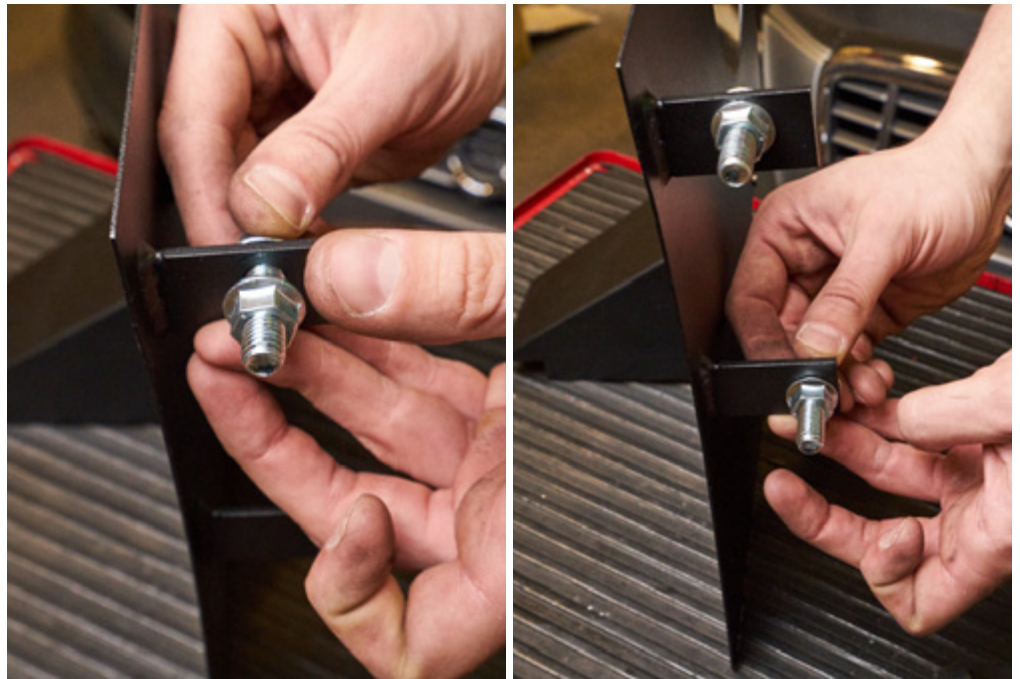


STEP 9

Insert the heatshield lining up the grommets with the holes on the base and mounting bracket.

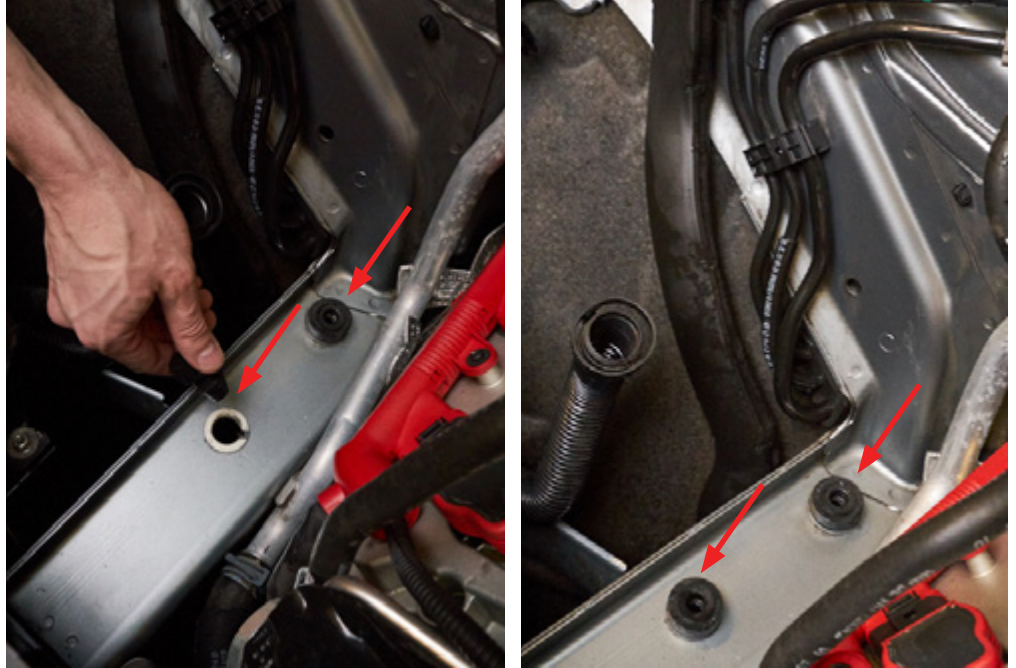
**STEP 10**

Thread the M10 nuts and bolts onto the heat shield brackets and tighten.



STEP 11

insert the two rubber grommets into the mounting holes on the engine bay.

**STEP 12**

Remove the factory airbox mount using a T-25 torx.



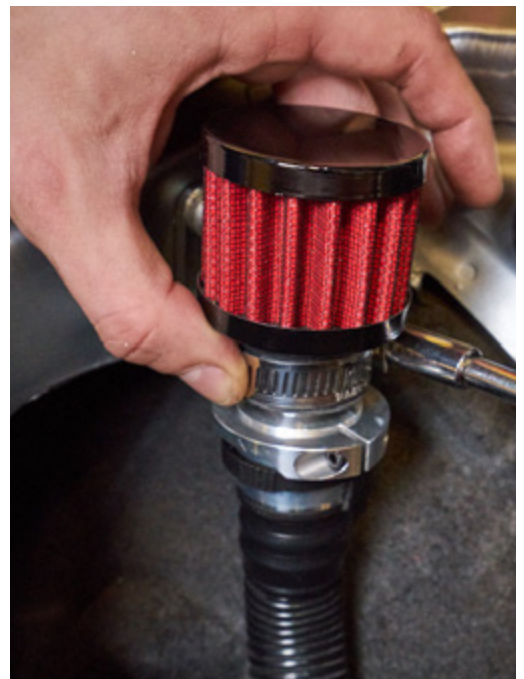
STEP 13

Mount the supplied billet breather hose bracket to the side wall.

Clip the billet reducer onto the end of the breather hose.

**STEP 14**

Tighten the bracket using a 2.5mm allen and install the breather filter using an 8mm socket.



STEP 15

Insert the heat shield into the rubber grommets and push down firmly

**STEP 16**

Install the silicon coupler onto the throttle body with a hose clamp.



STEP 17

Thread the intake pipe through the heat shield and attach it to the silicon coupler using a hose clamp.



STEP 18

Connect the breather hose extension and attach it to the back of the intake tube.



STEP 19

Attach the air filter to the intake tube using a hose clamp.

**STEP 20**

Slide on the small weather strip to the interior edge of the heat shield.



STEP 21

Attach the large weather strip to the top of the heat shield



STEP 22

Use the supplied zap strap to secure the fuel return line to the heat shield.



STEP 23

You are done!

